



# **inova-TECH**

## **ENGINEERING (PVT) LTD**

**INNOVATIVE FUTURE WITH A CREATIVE MASTER**

 : NO.200/6, 1<sup>st</sup> Lane, Egodawaththe Road, Boralasgamuwa.

 : 070 3389194, 071 9856450

 : [continovatech.sl@gmail.com](mailto:continovatech.sl@gmail.com)

Reg.No: 00216103

---

# COMPANY PROFILE

# Introduction

## About Us

**INOVA-TECH ENGINEERING(PVT)LTD** has been well established company which is emerged for providing vast range of engineering services under one roof, within one entity. Our main aims are to introduce new systems, products and services to the business world and to enhance current business processes along with new technological strategies.

The company is handled by five years' expertise engineers in Mechatronics, Civil, Electrical, Electronics & Telecommunication fields. It mainly focuses on the field of industrial automation services and innovative product development using latest technologies. We build vast service provider network for Electronics, Electrical, Telecommunication, Civil construction-based services, Software development services and other supporting services related to business management.

Our research and development capabilities give our customers an added advantage of customization and applications of latest technologies for their betterment.

### **Our Vision**

To become an innovative and sustainability driven engineering solutions provider in Asia with new technologies.

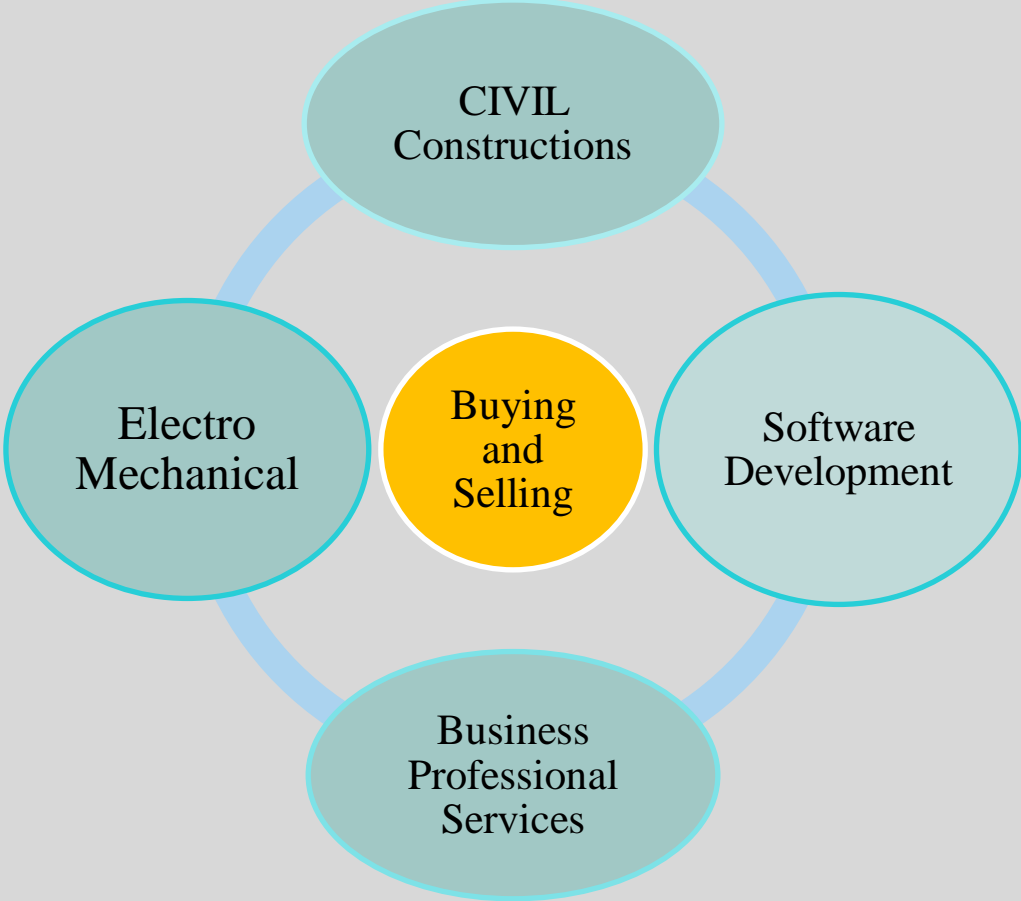
### **Our Mission**

Integrate your day to day business with customized innovative products and provides engineering and business management services to facilitate your work easier and productive.

### **Our Team**

Our team is highly skilled and well experienced technicians who are guided by two Mechatronics Engineers, one Civil Engineer, one Electrical Engineer those who has been rewarded with B.Tech. (Hons.) in engineering degrees, and business professionals related to supporting services [BBA Hons (Finance/Accounting) and CA Finalist].

**Our Business Model**



## OUR CAPABILITIES

### Our Expertise

We offer diverse services related to electrical and automation industry.

#### Electronic systems

- Microcontroller based designs
- PCB designs
- Security systems

#### Installation

- Electrical panel board
- 3 phase wiring
- Intelligent security systems
  - Security camera, CCTV systems
  - Detection systems
  - Alarm systems
- GPS navigation systems

## Industrial Automation

- CNC
  - Machine designing and fabrications
  - CNC wood carvings,
  - CNC fabric cutting, positing system.
  - Conversion of manual operating Machines to automated machines.
  - VFD controllers
  - DC motor Controllers
  
- PLC
  - Control systems (SCADA)
  - PLC controllers with HMI.
  - Timers, Counters, PWM controllers
  
- Pneumatics control systems
- PID control systems (Temperature control systems)
- Servo control systems (servo motor controlling)
- Mechanical controller systems. (Conveyor systems)
- Consultation for industrial controller systems

## RFID solutions

- UHF long range RFID solutions
  - Warehouse Management Systems
  - Asset Management Systems (Jewelry Shops)
  - Vehicle tracking Systems
  - Farmhouse Management Systems
  - Library Management Systems
  - Laundry Management Systems
- NFC near field communication systems
  - Access Control Systems

## Repairing services

- Industrial plant repairers
  - IGBT level repairers
  - Machines re-engineering
  - Ultra-sonic sawing machines
  - Fusing machines
  - Heat transfer machines
  - Injection molding machines
  - Industrials controller cards
- Computer repairing
  - Laptop/ motherboard chip level repairing

## **Communication services**

- Installing mini PABX systems
- Computer Networking
- IBS (in building Solution)
- Security systems (CCTV, Alarm)

## **Consultancy on Process Optimization**

- Process Optimization,
- Factory Optimization,
- Efficiency Improvements,
- Factory Layout Designing,
- Labor optimization.

## **CIVIL Construction field**

- Road constructions
- Building constructions
- Building wiring/Home wiring
- House planning
- BOQ planning



## OTHER SUPPORTING SERVICES RELATED TO BUSINESS

- **Business Process Development**

- **Inventory Controlling Systems**

- **Store Handling & Preparations**

- **Account Preparations**

- **Individual & Corporate tax Preparations**

- **Work Scheduling and Feasibility Studies**

- **BOM and Estimations**

- **Project Evaluations and Financial Planning**

- Design and Development of new Processors and Systems for Business and Business-related areas.
- Introduce new inventory Controlling systems for Business for minimize inventory related cost and improve productivity or efficiency (RFID Controlling Systems)
- Preparations of stores which optimize Efficiency of Inventory handling and warehousing
- Preparations of annual Financial statements, Quarterly Reports and Budget Performance reports
- Preparation and Handle Individual Tax and corporate tax (Return filling/ Planning/payment handling)
- Work scheduling and planning
- Evaluate feasibility of Business activities/ Conduct market research/ market feasibility research
- Preparations and scheduling of estimate for Labor and materials requirements/ Stock forecasting
- Evaluate Feasibility of Projects and Finance Planning
- Conduct solvency test for Business
- Planning Pre product Launch activities
- Design and develop software for reconciliations or accounting related functions.
- Advisory services for accounting functions

---

## Completed projects

### Projects involved

#### Water Test Mc #3 Automated Project



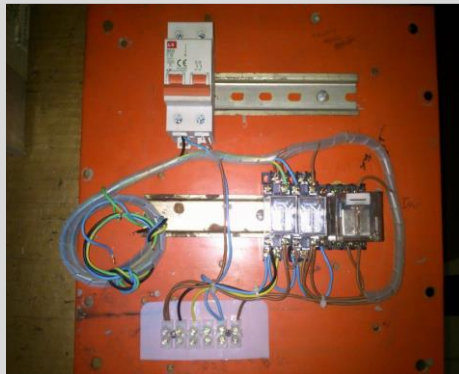
Old system



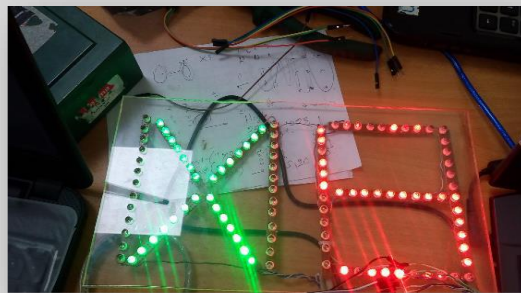
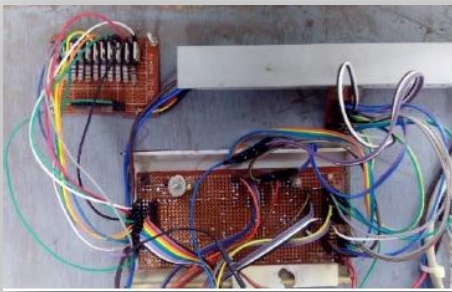
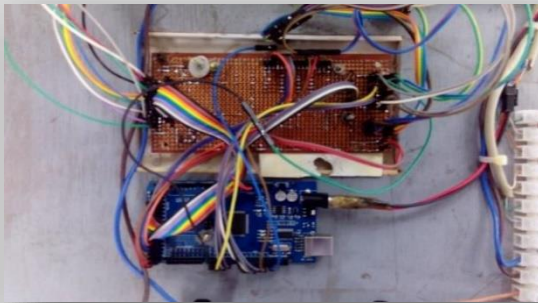
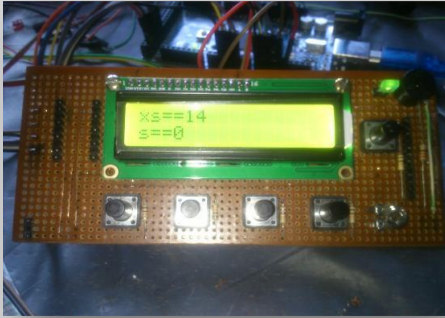
new automated system glove bucket

#### Automated water mixing system panel

The chlorine has been used as a germ killer of gloves. But chlorine gas is harmful for people. The excess chlorine is mixed with water and removed to the air after chlorination. Scrubbers have been used for this purpose.



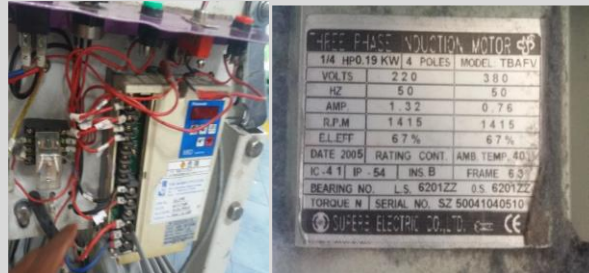
✚ Design a circuit to glove sizing and counting



---

## Captured services

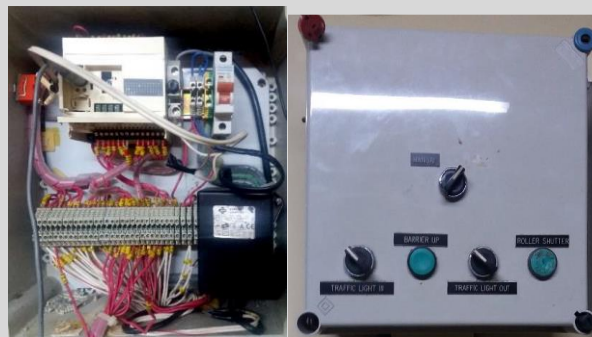
### Replacing inverter with motor rating plate.



### New panel installation testing



### Plc repairing



### VSD replacing



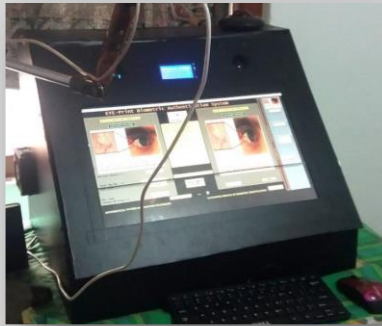


---

## **Innovations**

### **Eye-print based human identification system**

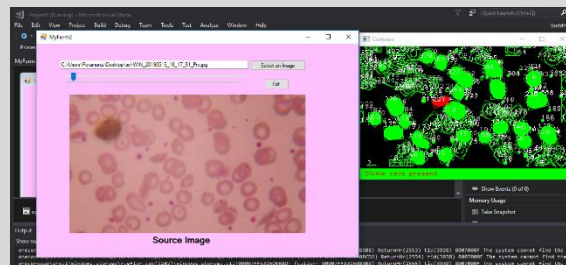
This project was done by INOVA-TECH ENGINEERING(PVT) LTD. Main function of this device is to identify the human. This project is still at the research level and it is to be developed as a product to be sold as a high level security system.



Patent: Applied.


### **Low cost Vision based sickle-cell anemia detection system**

This innovative project was conducted by INOVA-TECH ENGINEERING(PVT)LTD as well. The main function of this is to detect the variation of red blood cells for identifying the sickle cell anemia. This unit is a very efficient system and is a low cost unit for medical purposes and very useful for the blood donation camps and in identifying the affected sickle-cell patients in hospitals in Sri Lanka without the doctors are being consulted.



Patent: Applied.

## Contact Us: -

: Inova-tech engineering(pvt)ltd, NO.200/6, 1<sup>st</sup> Lane, Egodawaththe Road, Boralasgamuwa.

: 070 3389194, 071 9856450

: [continovatech.sl@gmail.com](mailto:continovatech.sl@gmail.com)

: [www.inovatecheng.lk](http://www.inovatecheng.lk)

**Thank you for taking the time to go through our business profile. If there are any questions or comments, please feel free to contact us.**